

# OPEN DATA REPOSITORIES AND CITATION INDEXES – DATA CITATION INDEX ON WEB OF SCIENCE

ACADEMIC LIBRARIES AND OPEN  
SCIENCE CONFERENCE

6TH DECEMBER 2016



**Clarivate  
Analytics**

Formerly the IP & Science  
business of Thomson Reuters



### Asian emissions in 2006 for the NASA INTEX-B mission

By: Zhang, Q.; Streets, D. G.; Carmichael, G. R.; et al.

ATMOSPHERIC CHEMISTRY AND PHYSICS Volume: 9 Issue: 14 Pages: 5131-5153



Full Text from Publisher

View Abstract

#### Open Access

☐ NO (59,907,495)

☒ YES (1,832,545)

Times Cited: 701

(from Web of Science Core Collection)



Highly Cited Paper

Usage Count ▾

### Results of PMIP2 coupled simulations of the Mid-Holocene experiments and large-scale features

By: Braconnot, P.; Otto-Bliesner, B.; Harrison, S.; et al.

CLIMATE OF THE PAST Volume: 3 Issue: 2 Pages: 261-277 Pub



Full Text from Publisher

View Abstract

### Protocol for the development of the Master Chemical Mechanism for the degradation of non-aromatic volatile organic compounds

By: Saunders, SM; Jenkin, ME; Derwent, RG; et al.

ATMOSPHERIC CHEMISTRY AND PHYSICS Volume: 3 Pages: 16



Full Text from Publisher

View Abstract

### Analysis and quantification of the diversities of aerosol lifetimes

By: Textor, C.; Schulz, M.; Guibert, S.; et al.

ATMOSPHERIC CHEMISTRY AND PHYSICS Volume: 6 Pages: 17



Full Text from Publisher

View Abstract

**13% OF TITLES IN WOS CORE COLLECTION ARE OPEN ACCESS**

#### % Open Access Growth in Web of Science Core Collection



**5 MB!**

**1956**



**2005**



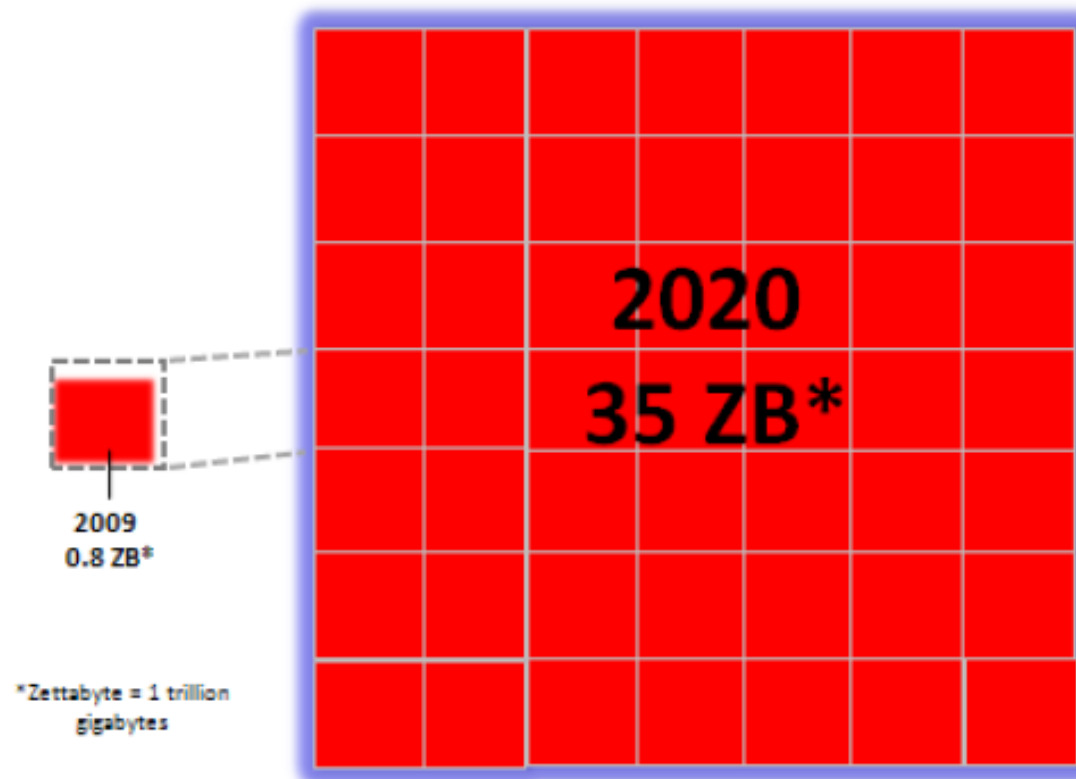
**2016**



## THE DIGITAL UNIVERSE EXPANSION

**Figure 1: The Digital Universe 2009 – 2020**

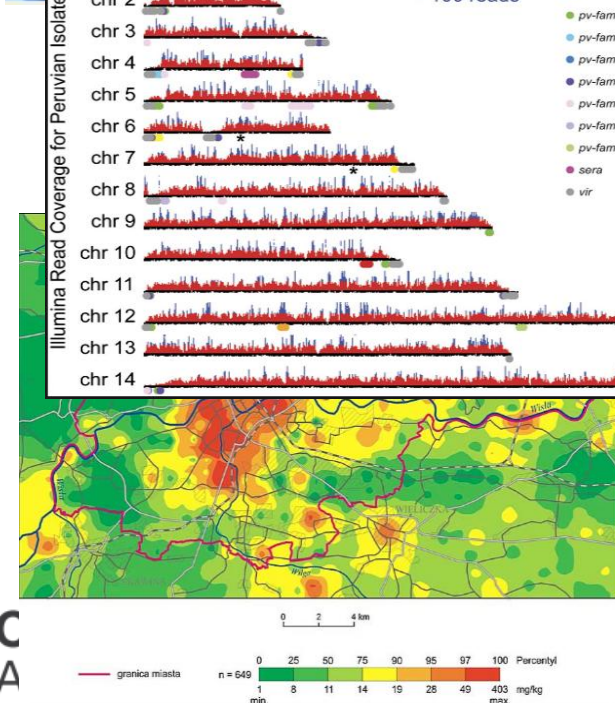
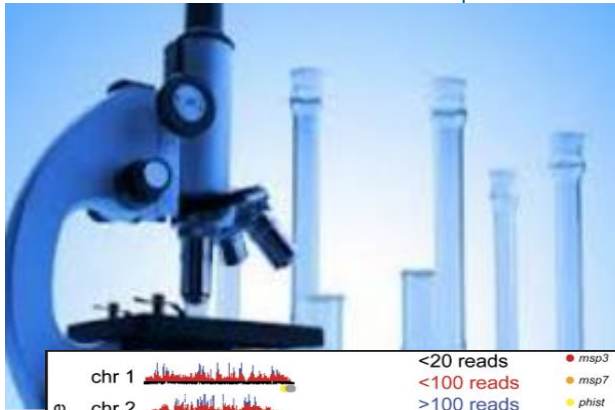
*Growing by a Factor of 44*





# The Data Citation Index<sup>SM</sup>

## Advancing Discovery, Access, and Citation of Research Data



Technology and Scientific Research. II. Scientific and Scientific Method

Adelbert Ames, Jr., Albert H. Hastoef, and William H. Itelson

University, Princeton, New Jersey.

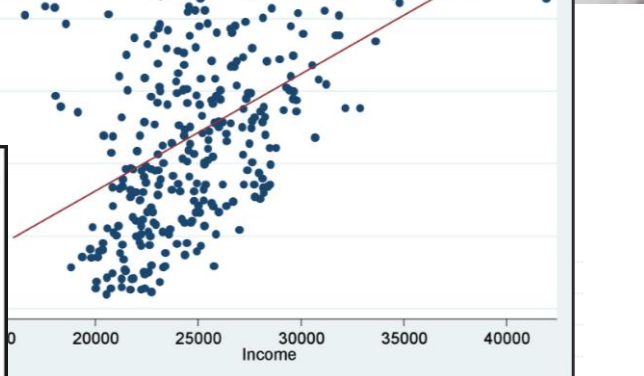
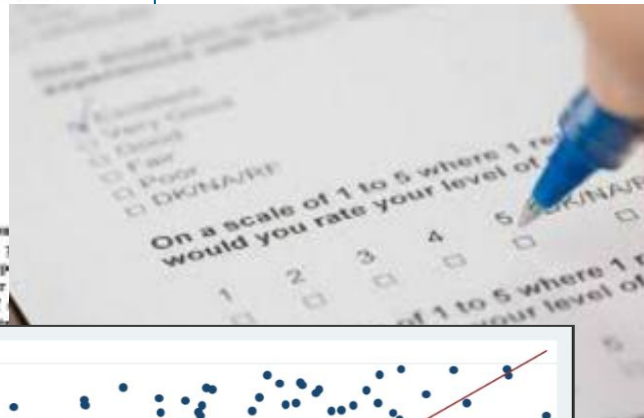
State, Hanover, New Hampshire, and

College, Hanover, New Hampshire

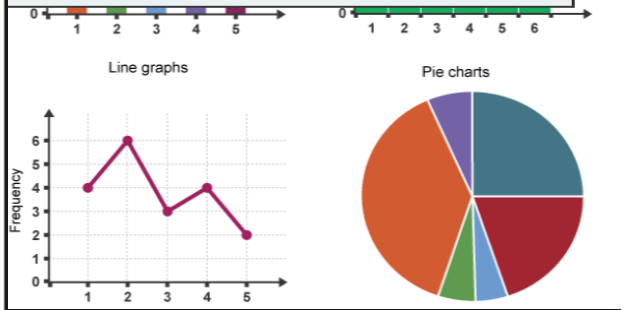
HAVE HAD TO DISCUSS the nature of and the apparent reason for scientific inquiry because "scientific research" has so often been thought of as a method of investigation, as the scientific method is a means for If we do not bear this scientific research is a technique of all-important considerations a problem for scientific formulation of the problem within itself the what is now scientifically the definition of scientific of the problem does not in investigation are

An hypothesis must be tested both in terms ability to predict immediate events and its of leading to further, more adequate hypothesis in scientific procedure there is a never process of hypothesizing, a constant flow of hypothesis from another, with each hypothesis to go beyond established formulations

It is in the way in which the problem that determines where what functional activities he will on the problem, which of those basis for standards in empirical what methodological procedures to devise. In this connection it that the popular conception of what "great" is that he has solved problems others. While this may be



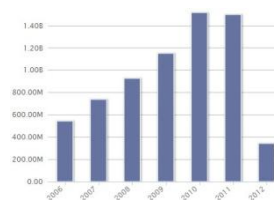
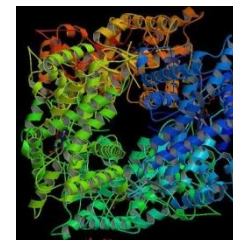
	A	B	C	D	E	F	G	H	I	J	K
1	Calculation of Water Flow Rates for Different Pipe Sizes										
2	( Hazen Williams Formula - U.S. units )										
3											
4	Pipe Material:	PVC				Hazen Williams Coefficient, C =				150	
5											
6	Pressure drop over the pipe length,	20				psi					
7											
8	Pipe	Water Flow Rate in GPM									
9	Length	Pipe Diameter in Inches									
10	ft	0.5	0.75	1	1.5	2	2.5	3	4	5	6
11	5	23	66	140	407	868	1560	2520	5371	9659	15601
12	10	16	45	96	280	597	1073	1733	3694	6643	10730
13	15	13	36	77	225	479	862	1393	2968	5337	8620
14	20	11	31	66	193	410	738	1192	2541	4569	7380
15	40	7	21	46	132	282	508	820	1747	3142	5076
16	100	4	13	28	81	172	309	500	1065	1916	3095
17											
18	Hazen Williams Equation as used in this spreadsheet:										
19											
20	$Q = 0.442 C D^{2.63} (\Delta P/L)^{0.54}$ , where										
21											
22	Q is the water flow rate in gpm										
23	D is the pipe diameter in inches										
24	L is the pipe length in ft										
25	$\Delta P$ is the pressure difference across pipe length L in psi										



### Research Data

Whenever and wherever there has been research, there has been research data – all information, in whatever form, created by researchers during the course of their work.

Over time as research data has moved from absolute physical form to electronic form the web-based “digital” information environment has provided tremendous opportunities for presentation and access to research data of all varieties.

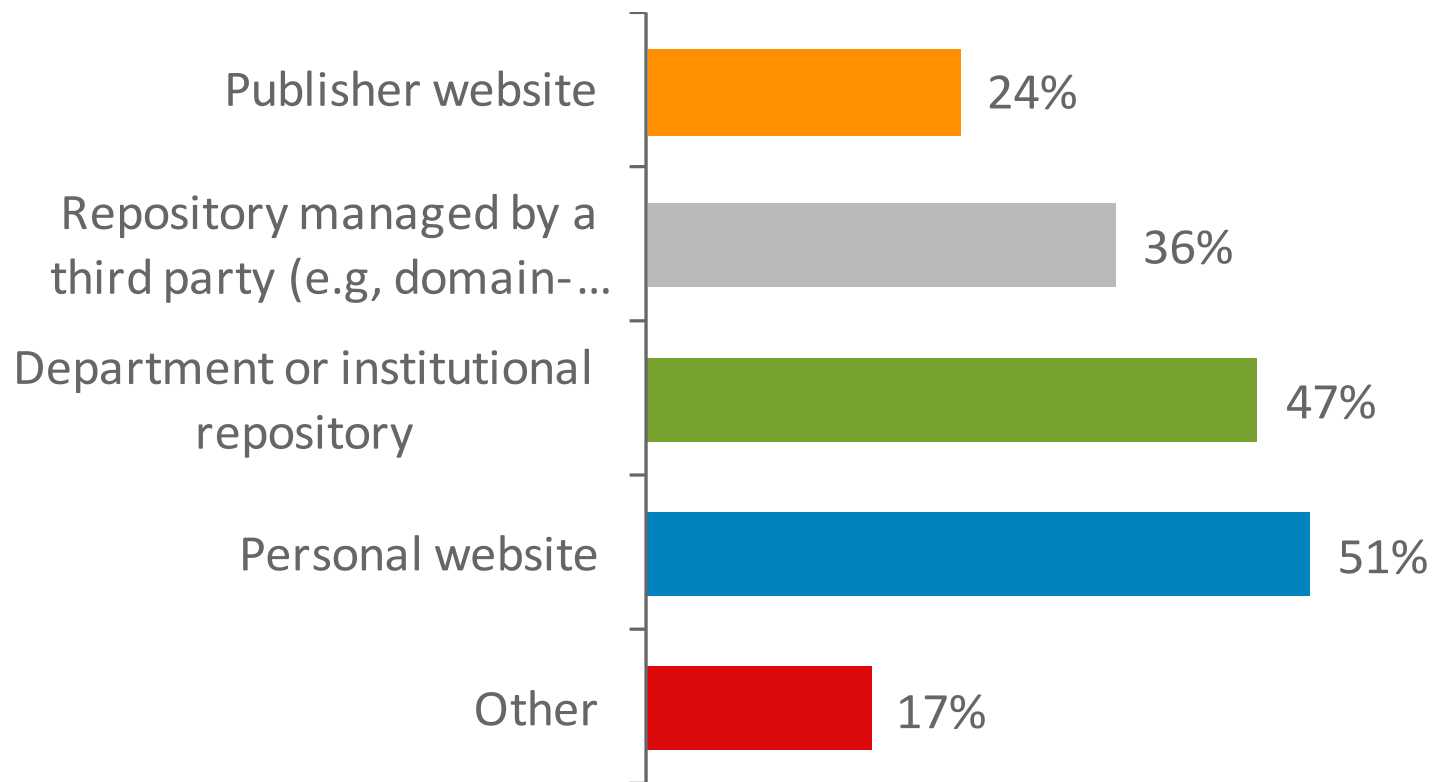


```
:GAGCAITGTGCACAATCGTGGCTTATAGCGCCGGTCGGGCCGTC
:GTACTACGAAAGCTTTGGGTCGCCAGCGCCAGTGGCTTACTG
:GAGGTGCCCTTCTTTAATAGGCTATCGGGGAGCGCCGAGGA
:ACCCGGTGTCTACTACTCAGAGTCTACCACTACAACTCTG
:TTCCATCGGGCACTCCAACCCCGTGTGTGCACGAGTCA
:GACAACTCGGTAGCCATGGGCTTCACAGTCTCCACAGGGAGG
```



Partner	2007	2008	2009	2010	2011	Avg Ann growth
World	\$1,162,708.3	\$1,300,135.6	\$1,056,816.3	\$1,277,388.4	\$1,479,492.0	6.8
Europe and Eurasia	\$286,484.8	\$328,386.9	\$278,646.0	\$386,025.6	\$328,873.4	3.7
European Union	\$246,356.9	\$272,951.8	\$219,880.2	\$338,913.9	\$287,463.7	2.1
Germany	\$3,722.0	\$2,649.3	\$2,138.3	\$2,427.9	\$1,886.2	-2.3
Belgium	\$25,291.9	\$29,028.4	\$21,629.7	\$21,731.1	\$28,218.8	4.3
Cyprus	\$189.0	\$217.4	\$160.8	\$154.3	\$27.1	-10.6
Czech Republic	\$1,262.4	\$1,378.3	\$989.7	\$1,413.8	\$1,080.6	8.3
Denmark	\$1,927.2	\$2,712.1	\$2,038.3	\$2,125.3	\$2,341.1	-3.8
Estonia	\$262.3	\$225.6	\$181.2	\$188.0	\$144.8	0.2
Finland	\$1,131.2	\$1,761.6	\$1,965.6	\$2,181.2	\$1,132.0	0.2
France	\$27,407.1	\$29,186.9	\$36,322.3	\$27,010.3	\$27,844.3	0.6
Germany	\$49,612.0	\$54,732.3	\$41,298.6	\$48,201.2	\$49,136.2	-0.3
Greece	\$2,111.0	\$1,911.8	\$2,075.7	\$2,196.8	\$1,851.6	-0.7
Hungary	\$1,291.7	\$1,431.2	\$1,231.7	\$1,260.2	\$1,412.2	3.5
Ireland	\$9,010.7	\$8,652.9	\$7,516.4	\$7,272.0	\$7,607.7	-3.9
Italy	\$14,141.3	\$15,478.6	\$12,232.6	\$14,191.4	\$12,991.2	3.3

## DEPOSITION OF DATA BY RESEARCHERS



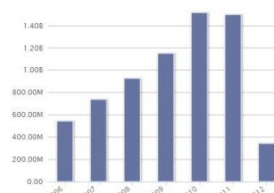
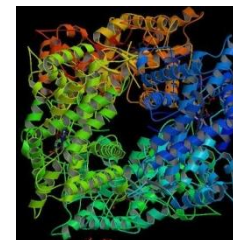
### Research Data – Influences on Sharing

In recent years a significant motivating factor for data sharing has been the influence of funding organizations.

In the United States, an event that would impact all aspects of research data curation and sharing was a 2010 mandate from the National Science Foundation –

**All funding proposals submitted or due on or after January 18, 2011, must include a “Data Management Plan” describing how the proposal will conform to NSF policy on the dissemination and sharing of research results.**

Globally, other funding organizations have produced similar mandates.



```

:GAGCATTGTGCACAATCGTGGCTTATAGCGCCGGTCCGGCCGTC
:GTACTACGAAAGCTTTGGCGTCCGAGCGCCAGCTGGCTTACTG
:GAGGTGCCCTTCTTTAATAGGCTATCGGGGAGCGCCGAGGA
:ACCCGGTGTATCTACTACAGAGTCTACACCACTACAACCTCTG
:TTCCATCGGGCGCACTCCACCCCGCTGTGTGCACGAGTCA
:GACAATCTGGTAGCCATGGGCTTCACAGTTCTCCACAGGGAGG
    
```



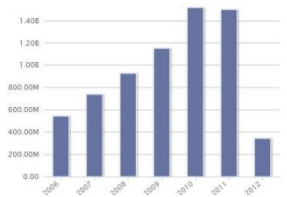
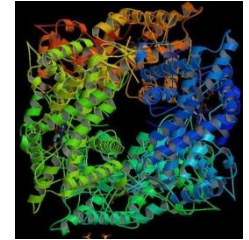
Partner	2007	2008	2009	2010	2011	Avg Ann growth
World	\$1,162,708.3	\$1,300,137.6	\$1,056,816.3	\$1,277,388.4	\$1,479,492.0	6.8
Europe and Eurasia	\$286,484.8	\$328,386.9	\$278,646.0	\$388,025.6	\$328,873.4	3.7
European Union	\$246,356.9	\$272,951.8	\$219,880.2	\$338,913.9	\$287,463.7	2.1
Germany	\$3,172.0	\$2,649.3	\$2,138.3	\$2,421.9	\$1,886.2	-2.3
Belgium	\$25,291.9	\$29,028.4	\$21,629.7	\$21,731.1	\$28,218.8	4.3
Cyprus	\$189.0	\$217.4	\$160.8	\$154.3	\$27.1	-10.6
Czech Republic	\$1,262.4	\$1,378.3	\$989.7	\$1,413.8	\$1,080.6	8.3
Denmark	\$1,927.2	\$2,712.1	\$2,078.3	\$2,125.3	\$2,341.1	-3.8
Estonia	\$262.3	\$227.6	\$181.2	\$188.9	\$144.8	-9.2
Finland	\$1,132.2	\$1,761.6	\$1,965.6	\$2,181.2	\$1,132.0	0.2
France	\$27,407.1	\$29,186.9	\$36,322.3	\$27,010.3	\$27,844.3	0.6
Germany	\$49,612.0	\$54,732.3	\$41,298.6	\$48,201.2	\$49,136.2	-0.3
Greece	\$2,111.0	\$1,911.8	\$2,275.7	\$2,196.8	\$1,881.6	-8.2
Hungary	\$1,291.7	\$1,431.2	\$1,231.7	\$1,290.2	\$1,412.2	3.5
Ireland	\$9,010.7	\$8,652.9	\$7,516.4	\$7,272.0	\$7,607.7	-3.9
Italy	\$14,141.3	\$15,478.6	\$12,232.8	\$14,191.4	\$12,991.2	3.3



### Research Data – Benefits of Sharing

Availability of datasets and various forms of research data has varied from field to field and region to region. However, the benefits of data sharing are obvious.

- Pure advancement of scholarship, as data may be re-used by other researchers with different approaches and objectives.
- Verification of results.
- Promotion of one's work
- Increase of citations



```
:GAGCAITGTGCACAATCGTGCTTATAGCGCCGGTGC GGCCGTC
:GTACTACGAAAGCTTTGGGTC CCGAGCGCCAGCTGGCTTACTG
:GAGGTGCCCTTCTTTAATAGGCTATCGGGGAGCGCCCGAGGA
:ACCGGGTGTCATCTACTCAGAGTCTTACCACCACTACAACCTCG
:TTCCATCGGGCGCACTCCAACCCCGCTGCTGTGCACGAGGTCA
:GACAATCTGGTAGCCATGGGCTTCACAGTTCTCCACAGGGAGGG
```

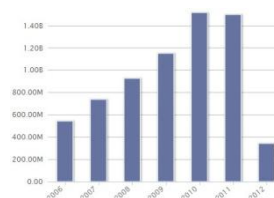
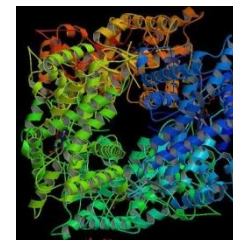


Partner	2007	2008	2009	2010	2011	Avg Ann growth
World	\$1,162,708.3	\$1,300,137.6	\$1,056,816.3	\$1,277,388.4	\$1,479,492.0	6.8
Europe and Eurasia	\$286,484.8	\$328,386.9	\$278,646.0	\$386,023.6	\$328,873.4	3.7
European Union	\$246,356.9	\$272,951.8	\$219,880.2	\$338,913.9	\$287,463.7	2.1
Germany	\$3,722.0	\$2,649.3	\$2,128.3	\$2,427.9	\$1,886.2	-2.3
Belgium	\$25,291.9	\$29,028.4	\$21,629.7	\$21,731.1	\$28,218.8	4.3
Cyprus	\$189.0	\$217.4	\$160.8	\$154.3	\$27.1	-10.6
Czech Republic	\$1,262.4	\$1,378.3	\$989.7	\$1,413.8	\$1,080.6	8.3
Denmark	\$1,927.2	\$2,712.1	\$2,078.3	\$2,125.3	\$2,341.7	-3.8
Estonia	\$262.3	\$227.6	\$181.2	\$188.0	\$144.6	0.2
Finland	\$1,132.2	\$1,761.6	\$1,965.6	\$2,181.2	\$1,129.2	0.2
France	\$27,407.1	\$29,186.9	\$26,522.3	\$27,010.3	\$27,844.3	0.6
Germany	\$49,612.0	\$54,732.3	\$41,298.6	\$48,201.2	\$49,136.2	-0.3
Greece	\$2,111.0	\$1,911.8	\$2,075.7	\$2,196.8	\$1,881.6	-0.7
Hungary	\$1,291.7	\$1,431.2	\$1,231.7	\$1,290.2	\$1,412.2	3.5
Ireland	\$9,010.7	\$8,652.9	\$7,516.4	\$7,272.0	\$7,607.7	-3.9
Italy	\$14,141.3	\$15,478.6	\$12,232.6	\$14,191.4	\$12,991.2	3.3

### Research Data – Potential Issues with Sharing

We can however, appreciate some of the issues with data sharing.

- Understandably, the sheer effort required to produce the data creates a strong sense of ownership.
- Competitive considerations.
- Confidentiality issues.
- The culture of data sharing within the field.
- The effort required to appropriately archive and make accessible various forms of data.



```

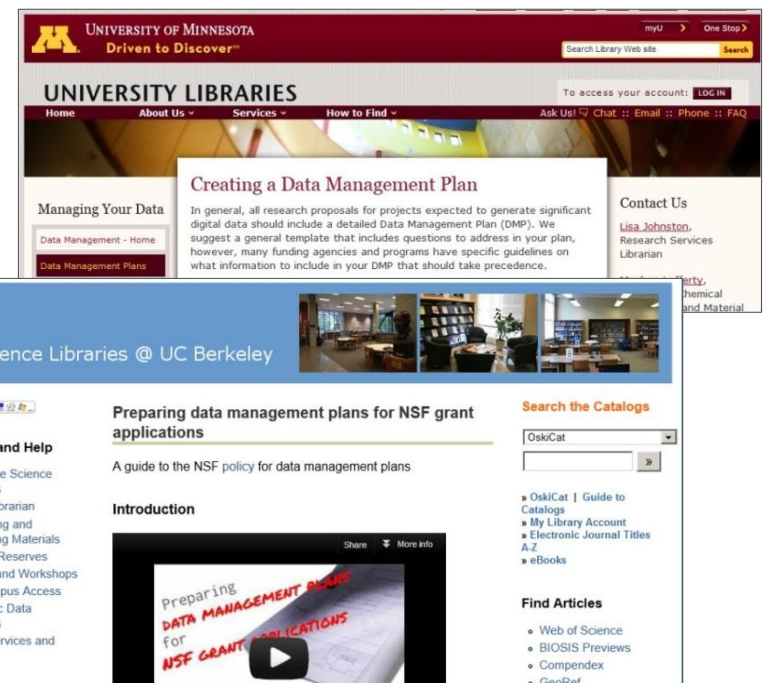
:GAGCATTGTGCACAATCGTGGCTTATAGCGGCCGCTGCGGCCGCTC
:GTACTACGAAAGCTTTGGGTCGCCAGCGCCAGCTGGCTTACTG
:GAGGTGCCCTTCTTTAATAGGCTATCGGGGAGCGCCCGAGGA
:ACCCGGTGCATCTACTCAGAGTCTACACCACCTACAACCTCTG
:TTCCATCGGGCACTCCAACCCCGCTGCTGTGCACGAGTCA
:GACAATCTGGTAGCCATGGGCTTCACAGTTCTCCACAGGGAGGG
    
```



Partner	2007	2008	2009	2010	2011	Avg Ann growth
World	\$1,162,708.3	\$1,300,135.6	\$1,056,816.3	\$1,277,388.4	\$1,479,492.0	6.8
Europe and Eurasia	\$286,484.8	\$328,386.9	\$278,646.0	\$388,025.6	\$328,873.4	3.7
European Union	\$246,356.9	\$272,951.8	\$219,880.2	\$328,913.9	\$287,463.7	2.1
Austria	\$3,722.0	\$2,649.3	\$2,138.3	\$2,427.9	\$1,886.2	-2.3
Belgium	\$25,291.9	\$29,028.4	\$21,629.7	\$21,731.1	\$28,218.8	4.5
Cyprus	\$189.0	\$217.4	\$160.8	\$154.3	\$27.1	-10.6
Czech Republic	\$1,262.4	\$1,378.3	\$989.7	\$1,413.8	\$1,080.6	8.3
Denmark	\$1,927.2	\$2,712.1	\$2,078.3	\$2,125.3	\$2,246.1	-3.8
Estonia	\$262.3	\$225.6	\$181.2	\$189.0	\$144.6	-10.2
Finland	\$1,132.2	\$1,761.6	\$1,965.6	\$2,181.2	\$1,129.2	0.2
France	\$27,407.1	\$29,186.9	\$26,522.3	\$27,010.3	\$27,844.3	0.6
Germany	\$49,612.0	\$54,732.3	\$41,298.6	\$48,201.2	\$49,136.2	-0.2
Greece	\$2,111.0	\$1,911.8	\$2,257.7	\$2,196.8	\$1,851.6	-10.2
Hungary	\$1,291.7	\$1,431.2	\$1,231.7	\$1,290.2	\$1,412.2	3.5
Ireland	\$9,010.7	\$8,652.9	\$7,516.4	\$7,272.0	\$7,607.7	-3.9
Italy	\$14,141.3	\$15,478.6	\$12,232.6	\$14,191.4	\$15,991.2	3.3

### Research Data – Influences of Sharing

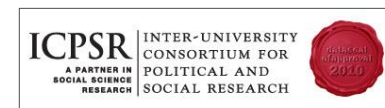
The impact of the NSF mandate on the research community has been extended to the library community, as information professionals find a greater need to serve as trusted consultants in advising university faculty on data management planning.



### Research Data – Diverse and Disparate Sources

Today there are many quality repositories maintained for the purpose of providing access to research data. Available mechanisms for research data curation and sharing are proliferating.

However, gaining a clear understanding of what exists can be a challenge – and repositories are separately maintained, with varying schemes of organization and search capabilities.



**Clarivate Analytics**

Formerly the IP & Science business of Thomson Reuters





## OBSERVED RESEARCHER PROBLEMS

- Access & discovery
- Citation standards
- Lack of willingness to deposit and cite
- Lack of recognition / credit





## WHERE DO WE START?

- Enable the discovery of data repositories, data studies and data sets in the context of traditional literature
- Help researchers find data sets and studies and track the full impact of their research output
- Provide expanded measurement of researcher and institutional research output and assessment
- Facilitate more accurate and comprehensive bibliometric analyses



REUTERS/ Moham Riiza

REPOSITORY EVALUATION,  
SELECTION, AND COVERAGE POLICIES

FOR THE DATA CITATION INDEX<sup>SM</sup> WITHIN THOMSON REUTERS WEB OF KNOWLEDGE<sup>SM</sup>

In 2012, Thomson Reuters has launched the **Data Citation Index** with the objective of presenting a single source of discovery for scientific, social sciences, and arts & humanities information by connecting foundational research within data repositories around the world to related peer-reviewed literature in journals, books, and conference proceedings already indexed in the Web of Science.



### REPOSITORY EVALUATION, SELECTION, AND COVERAGE POLICIES

FOR THE DATA CITATION INDEX<sup>SM</sup> WITHIN THOMSON REUTERS WEB OF KNOWLEDGE<sup>SM</sup>

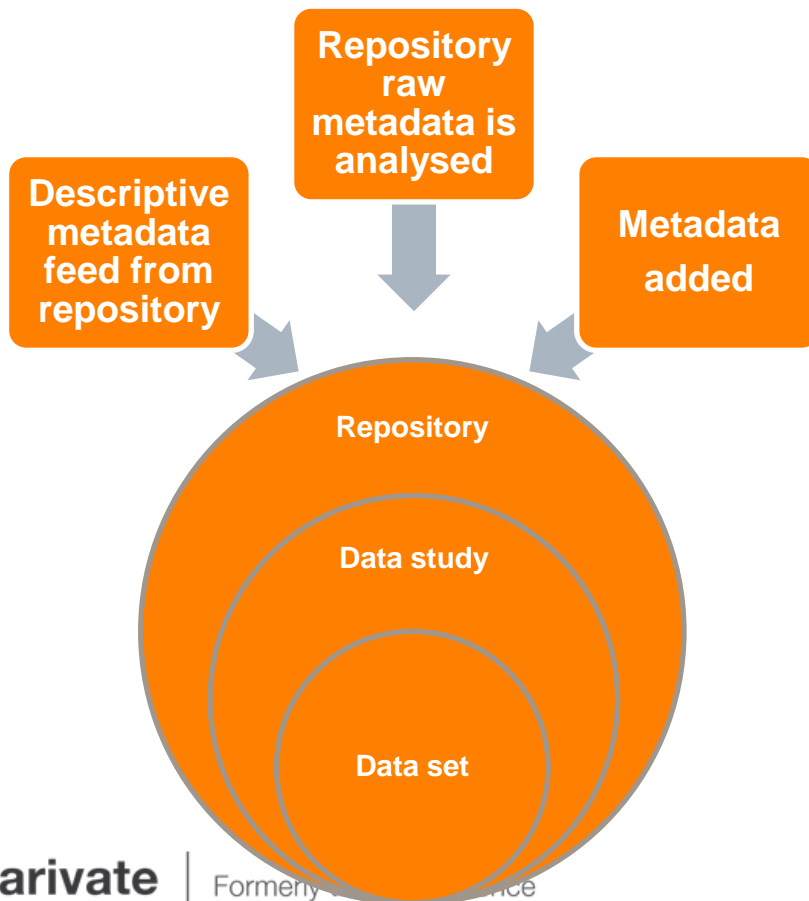
As we evaluate repositories for inclusion, some of the things we consider are:

- Editorial Content - ensuring that material is desirable to the research community.
- Persistence and stability of the repository, with a steady flow of new information.
- Thoroughness and detail of descriptive information.
- Links from data to research literature.

## INDEXING A DATA REPOSITORY ON WEB OF SCIENCE

### Record Types

- **Repository/Source:** Comprises data studies, data sets. Stores and provides access to the raw data.
- **Data Study:** Descriptions of studies or experiments with associated data which have been used in the data study. Includes serial or longitudinal studies over time.
- **Data Set:** A single or coherent set of data or a data file provided by the repository, as part of a collection, data study or experiment.





## TYPES OF DATA BY DISCIPLINE

ART & HUMANITIES	SOCIAL SCIENCES	SCIENCE & TECHNOLOGY
CULTURAL HERITAGE	POLL DATA	MAPS
LANGUAGE CORPUS	ECONOMIC STATISTICS	ALGORITHMS
IMAGE COLLECTIONS	LONGITUDINAL DATA	GENOMICS
RECORDINGS	NATIONAL CENSUS	SKY SURVEYS
	PUBLIC OPINION SURVEYS	ASTROPHYSICS
		REMOTE SENSING
		MUSEUM SPECIMENS



# The Data Citation Index<sup>SM</sup>

Advancing Discovery, Access, and Citation of Research Data

The screenshot displays the Web of Science homepage. At the top, navigation links include Web of Science™, InCites™, Journal Citation Reports®, Essential Science Indicators™, and EndNote™. The main header features the Web of Science™ logo and the Thomson Reuters™ logo. Below the header, a search bar contains the text "child\* health\*". To the right of the search bar, there are links for "My Tools", "Search History", and "Marked List". A dropdown menu is open under the "Data Citation Index<sup>SM</sup>" tab, listing various databases: All Databases, Web of Science™ Core Collection, Biological Abstracts®, BIOSIS Citation Index<sup>SM</sup>, BIOSIS Previews®, CABI: CAB Abstracts® and Global Health®, Chinese Science Citation Database<sup>SM</sup>, Current Contents Connect®, Data Citation Index<sup>SM</sup> (highlighted with a red arrow), Derwent Innovations Index<sup>SM</sup>, FSTA® - the food science resource, Inspec®, KCI-Korean Journal Database, MEDLINE®, SciELO Citation Index, and Zoological Record®. A "Learn More" link is at the bottom of the dropdown. On the left, the "BASIC SEARCH" section includes a "TIMESPAN" filter set to "All years" and a date range from 1900 to 2015. Below this, the "MORE SETTINGS" section shows "Citation Indexes" with checkboxes for "Science (DCI-S) --1900-present" and "Social Sciences & Humanities (DCI-S)". A note states "Data last updated: 2015-05-21". At the bottom left, there is an "Auto-suggest publication names" section with a dropdown set to "On". On the right side of the page, there is a "Search" button and a link to "Click here for tips to improve your search."

Welcome to the new Web of Science! [View a brief tutorial.](#)

[Click here for tips to improve your search.](#)

The Data Citation Index is presented as an integral component of the Web of Science platform with the look and feel of all components, such as Web of Science.

**Clarivate  
Analytics**

Formerly the IP & Science  
business of Thomson Reuters

### WEB OF SCIENCE<sup>TM</sup>

Search

#### Results: ...

(from All Databases)

(Number of results is approximate)

You searched for: TOPIC: (child\* health\*)  
...More

#### Refine Results

Search within results for...



#### Databases

#### Research Domains

- ☐ SCIENCE TECHNOLOGY
- ☐ SOCIAL SCIENCES
- ☐ ARTS HUMANITIES

Refine

#### Document Types

Refine

Exclude

Cancel

The first 100 Document Types (by record count) are shown.

- |   |                                      |  |   |
|---|--------------------------------------|--|---|
| <input type="checkbox"/> ARTICLE        | <input type="checkbox"/> EDITORIAL   | <input type="checkbox"/> REFERENCE MATERIAL  | <input type="checkbox"/> BIBLIOGRAPHY           |
| <input type="checkbox"/> OTHER          | <input type="checkbox"/> LETTER      | <input type="checkbox"/> BIOGRAPHY           | <input type="checkbox"/> RETRACTION             |
| <input type="checkbox"/> MEETING        | <input type="checkbox"/> CASE REPORT | <input type="checkbox"/> UNSPECIFIED         | <input type="checkbox"/> STANDARD               |
| <input type="checkbox"/> REVIEW         | <input type="checkbox"/> DATA SET    | <input type="checkbox"/> REPORT              | <input type="checkbox"/> GOVERNMENT PUBLICATION |
| <input type="checkbox"/> ABSTRACT       | <input type="checkbox"/> PATENT      | <input type="checkbox"/> CORRECTION          | <input type="checkbox"/> REPOSITORY             |
| <input type="checkbox"/> BOOK           | <input type="checkbox"/> DATA STUDY  | <input type="checkbox"/> LEGISLATION         | <input type="checkbox"/> ART AND LITERATURE     |
| <input type="checkbox"/> CLINICAL TRIAL | <input type="checkbox"/> NEWS        | <input type="checkbox"/> THESIS DISSERTATION |   |

Refine

Exclude

Cancel

The variety of document types represented in different resources all available through Web of Science All database search

**Results: 12,474**  
(from Data Citation Index)

You searched for: TOPIC: (child\* h  
ealth\*) ...More

Create Alert

**Refine Results**

Search within results for...

**Web of Science Categories**

**Subject Areas**

- ☐ SOCIOLOGY (2,674)
- ☐ FAMILY STUDIES (2,541)
- ☐ SCIENCE TECHNOLOGY OTHER TOPICS (2,049)
- ☐ BUSINESS ECONOMICS (1,852)
- ☐ DEMOGRAPHY (1,498)

more options / values...

**Document Types**

- ☐ DATA SET (9,031)
- ☐ DATA STUDY (3,436)
- ☐ REPOSITORY (7)

more options / values...

Sort by: Times Cited -- highest to lowest

- ☐ Select
- ☐ 1. Times Cited -- highest to lowest
- ☐ 2. Times Cited -- lowest to highest
- ☐ 3. Relevance
- ☐ 4. First Author -- A to Z
- ☐ 5. First Author -- Z to A
- ☐ 6. Source -- A to Z

EndNote online Add to Marked List

**labor Market Experience, 1966-1992.**  
Source Research. The Ohio State University  
and Social Research  
10

**National Longitudinal Study of Adolescent Health (Add Health), 1994-2008.**  
By: Harris, Kathleen Mullan; Udry, JRichard  
Inter-university Consortium for Political and Social Research  
DOI: http://dx.doi.org/10.3886/ICPSR21600 Version: v4  
Document Type: Data study  
View Abstract

**National Health and Nutrition Examination Survey III, 1988-1994.**  
Group Author(s): United States Department of Health and Human Services. National Center for Health Statistics  
Inter-university Consortium for Political and Social Research  
DOI: http://dx.doi.org/10.3886/ICPSR02231 Version: v1  
Document Type: Data study  
View Abstract

**Avon Longitudinal Study of Parents and Children (ALSPAC)**  
Group Author(s): ALSPAC Study Team  
Avon Longitudinal Study of Parents and Children (ALSPAC)  
Source URL: http://www.bristol.ac.uk/alspac/  
Document Type: Repository  
View Abstract

**Fragile Families and Wellbeing Study**  
Group Author(s): Bendheim-Thoman Center for Research on Child Wellbeing;  
Fragile Families and Wellbeing Study  
Source URL: http://www.fragilefamilies.princeton.edu  
Document Type: Repository

Page 1 of 1,248

Analyze Results

Times Cited: 1,236  
(from All Databases)

Times Cited: 1,135  
(from All Databases)

Times Cited: 1,028  
(from All Databases)

Search Results within the Data Citation Index present all of the powerful Web of Science options for exploring a body of information.

### UniProt Knowledgebase.

Edited by: Uniprot Consortium

UniProt Knowledgebase

Source URL: <http://www.uniprot.org/>

Viewed Date:

Published: 2010

### Abstract

The UniProt Knowledgebase is a comprehensive annotation. In addition to taxonomic data, it provides classifications and other data.

### From protein sequences to 3D-structures and beyond: the example of the UniProt Knowledgebase

By: Hinz, U (Hinz, Ursula)<sup>[1]</sup>

Group Author(s): UniProt Consortium

[View ResearcherID and ORCID](#)

CELLULAR AND MOLECULAR LIFE SCIENCES

Volume: 67 Issue: 7 Pages: 1049-1064

DOI: 10.1007/s00018-009-0229-6

Published: APR 2010

[View Journal Information](#)

### Funding

#### Funding Agencies

National Institutes of Health

European Commission

NIH GO

2P41HG02273-07

Swiss Federal Office of Education and Science

GEN2PHEN

200754

MICROME

222886-2

NIH

5R01GM080646-04

NIH

3R01GM080646-04S2

### Abstract

With the dramatic increase in the volume of experimental results in every domain of life sciences, assembling pertinent data and combining information from different fields has become a challenge. Information is dispersed over numerous specialized databases and is presented in many different formats. Rapid access to experiment-based information about well-characterized proteins helps predict the function of uncharacterized proteins identified by large-scale sequencing. In this context, universal knowledgebases play essential roles in providing access to data from complementary types of experiments and serving as hubs with cross-references to many specialized databases. This review outlines how the value of experimental data is optimized by combining high-quality

Funding information for the Repository is presented when available.

### Citation Network

11 Times Cited

0 Cited References

[Create Citation Alert](#)

(data from Web of Science<sup>TM</sup> Core Collection)

### Citation Network

16 Times Cited

106 Cited References

[View Related Records](#)

[View Citation Map](#)

[Create Citation Alert](#)

(data from Web of Science<sup>TM</sup> Core Collection)

### All Times Cited Counts

17 in All Databases

16 in Web of Science Core Collection

15 in BIOSIS Citation Index

0 in Chinese Science Citation Database

0 in Data Citation Index

1 in Russian Science Citation Index

### Times Cited Counts

All Databases

Web of Science Core Collection

BIOSIS Citation Index

Chinese Science Citation Database

Data Citation Index

Russian Science Citation Index

SciELO Citation Index

### Usage Count

Last 180 Days: 5

Since 2013: 8

[Learn more](#)

### Most Recent Citation

Hinz, Ursula. From protein sequences to 3D-structures and beyond: the example of the UniProt

### Roper Center for Public Opinion Research.

Edited by: Roper Center

Roper Center for Public Opinion Research

Source URL: <http://www.ropercenter.uconn.edu/>

Viewed Date: 07 Dec 2011

Published: 1947

Link to all Data Citation Index content associated with this particular Repository.

#### Abstract

Founded in 1947, the Roper Center for Public Opinion Research promotes the intelligent, responsible and imaginative use of public opinion research in an increasingly complex and interdependent global environment. Through the maintenance of the world's largest public opinion research archive, the Roper Center strives to improve the practice of survey research at the University of Connecticut. All Rights Reserved

#### Document Information

Document Type: Repository

Language: English

Accession Number: DRCI:DATA2012001000656741

#### Other Information

Cited References in Data Citation Index: 0

#### Associated Records:

12,064

(from Data Citation Index)

You searched for: Roper Center, Roper Center for Public Opinion Research. [...More](#)

#### Refine Results

Search within results for...

#### Web of Science Categories

- ☐ SOCIOLOGY (12,064)
- ☐ SOCIAL SCIENCES INTERDISCIPLINARY (12,054)
- ☐ POLITICAL SCIENCE (5)
- ☐ COMMUNICATION (4)
- ☐ ECONOMICS (2)

[more options / values...](#)

[Refine](#)

Sort by: [Year Published -- newest to oldest](#)

☐ Select Page



[Save to EndNote online](#)

[Add to Marked List](#)

#### 1. Roper Social and Political Trends Data, 1973-1994.

Group Author(s): The Roper Organization  
Roper Center for Public Opinion Research  
Source URL: [http://www.ropercenter.uconn.edu/cgi-bin/hsrun.exe/roperweb/Catalog40/Catalog40.htm?start=summary\\_Link?Archno=USRoper1994-Trends](http://www.ropercenter.uconn.edu/cgi-bin/hsrun.exe/roperweb/Catalog40/Catalog40.htm?start=summary_Link?Archno=USRoper1994-Trends)  
Document Type: Data study

[View Abstract](#)

#### 2. NORC Survey:.

Group Author(s): National Opinion Research Center [NORC]  
Roper Center for Public Opinion Research  
Source URL: [http://www.ropercenter.uconn.edu/cgi-bin/hsrun.exe/roperweb/Catalog40/Catalog40.htm?start=summary\\_Link?Archno=USNORC1950-0274](http://www.ropercenter.uconn.edu/cgi-bin/hsrun.exe/roperweb/Catalog40/Catalog40.htm?start=summary_Link?Archno=USNORC1950-0274)  
Document Type: Data study

[View Abstract](#)

#### 3. General Electric Quarterly Survey 70-01 (NO CODEBOOK).

Group Author(s): General Electric  
Roper Center for Public Opinion Research  
Source URL: [http://www.ropercenter.uconn.edu/cgi-bin/hsrun.exe/roperweb/Catalog40/Catalog40.htm?start=summary\\_Link?Archno=USGE1970-01](http://www.ropercenter.uconn.edu/cgi-bin/hsrun.exe/roperweb/Catalog40/Catalog40.htm?start=summary_Link?Archno=USGE1970-01)  
Document Type: Data study

Associated Data: 12,064 (from Data Citation Index)

Roper Social and Political Trends Data, 1973-1994.	Data study	<a href="#">Link to External Source</a>
NORC Survey:.	Data study	<a href="#">Link to External Source</a>
General Electric Quarterly Survey 70-01 (NO CODEBOOK).	Data study	<a href="#">Link to External Source</a>
Family Life and Sexual Learning.	Data study	<a href="#">Link to External Source</a>

[View All Associated Data](#)



### Roper Center for Public Opinion Research.

Edited by: Roper Center

**Welcome**

[Sign In](#) | [Feedback](#) | [Support](#) | [iPOLL](#)

Powered by  
**ROPER**  
CENTER  
PUBLIC OPINION ARCHIVES

 **Dataset Abstract**

[NEW SEARCH](#)

**DOWNLOAD DOCUMENTATION**  
Survey questionnaires and documentation are available for free download.  
[PDF file \(3994kb\)](#)

**DOWNLOAD DATASET**  
Datasets are available for this survey.  
If you are a member with a personalized account, please [Sign In](#), otherwise contact Data Services at 860.486.4440 or [rcweb@ropercenter.uconn.edu](mailto:rcweb@ropercenter.uconn.edu).

**Title:** USIA Poll # 1957-XX10: War/Science/Foreign Policy [GMUSIA1957-XX10]  
**Survey Sponsor:** United States Information Agency [USIA]  
**Survey Firm:** DIVO-Institut für Wirtschaftsforschung, Sozialforschung und Angewandte Mathematik  
**Study Date:** November, 1957  
**Sample:** West German adults--21 years old and over  
**Sample Size:** 813  
**Variables:** 187  
**Abstract:** Feelings toward various countries (4); USSR favorability (2); US favorability (2); feelings toward political leaders (4); atomic energy (1); West Germany aligning with east or west (1); side in US-Russia war (1); West German war involvement (1); America preventing war (1); Soviet Russia preventing war (1); US vs. USSR as stronger power (2); stronger scientifically developed country (3); stronger military power (2); stronger atomic power (1); ensuring security (1); NATO effectiveness (2); increasing military for modern weapons (2); Am

#### Other Information

Cited References in Data Citation Index: 0

Associated Data: **12,064** (from Data Citation Index)

Roper Social and Political Trends Data, 1973-1994.	Data study	<a href="#">Link to External Source</a>
NORC Survey:.	Data study	<a href="#">Link to External Source</a>
General Electric Quarterly Survey 70-01 (NO CODEBOOK).	Data study	<a href="#">Link to External Source</a>
	Data study	<a href="#">Link to External Source</a>

Link out directly to the original item, in this case a Data Study.

### Crystallography Open Database

Source URL: <http://www.crystallography.net/>

Viewed Date: 11 Jan 2012

Published: 2009

### Abstract

Using an open-access distribution model, the Crystallography Open Database collects all known 'small molecule / small to medium sized unit cell' crystal<br />structures of organic, inorganic, metal-organic compounds and minerals, excluding biopolymers.

### Author Information

#### Addresses:

1. Departamento de Quimica Inorganica, Facultad de Ciencias, Universidad de Granada, Spain
2. Department of Geosciences, University of Arizona, USA
3. Department of Materials Engineering, University of Trento, Italy
4. Department of Physics, Portland State University, USA
5. Department of Protein - DNA Interactions, Vilnius University Institute of Biotechnology, Lithuania
6. Department of Protein - DNA Interactions, Vilnius University Institute of Biotechnology, Lithuania
7. Technological Institute of Superhard and New Carbon Materials, Minsk, Belarus
8. Universite de Caen-Basse Normandie, France
9. Universite du Maine, Laboratoire des Oxydes et Fluorures, France

E-mail Addresses: [cod-bugs@ibt.lt](mailto:cod-bugs@ibt.lt)

### Funding

Funding Agency	Grant Number
Research Council of Lithuania	MIP-124/2010

### Categories / Classification

Research Areas: Crystallography

Web of Science Category: Crystallography

### Document Information

Document Type: Repository

Data Type: crystal structure

### Cited References

 Create Citation Alert

(data from Web of Science<sup>TM</sup> Core Collection)

### All Times Cited Counts

3 in All Databases  
3 in Web of Science Core Collection  
1 in BIOSIS Citation Index  
0 in Chinese Science Citation Database  
0 in Data Citation Index  
0 in Russian Science Citation Index  
0 in SciELO Citation Index

### Usage Count

Last 180 Days: 0

### How to cite this Resource - Google Chrome

about:blank

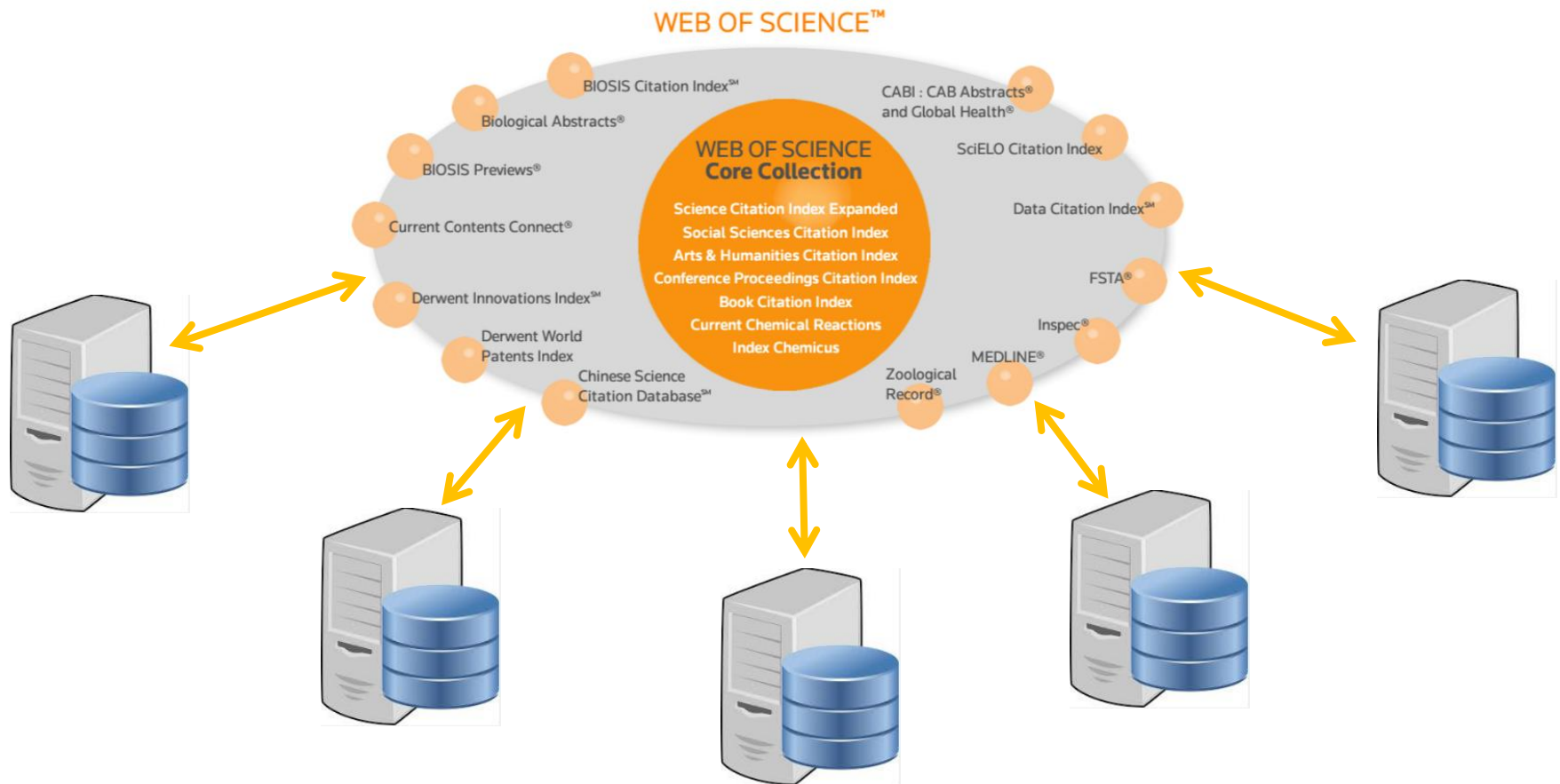
Thomson Reuters recommends citing this resource as:

Grazulis, Saulius; Daskevicius, Adriana; Merkys, Andrius; Chateigner, Daniel; Lutterotti, Luca; Quiros, Miguel; Serebryanaya, Nadezhda R.; Moeck, Peter; Downs, Robert T.; Le Bail, Armel (2009): Crystallography Open Database. Crystallography Open Database. <http://www.crystallography.net/>

This record is from:  
Data Citation Index<sup>SM</sup>

[How to cite this Resource](#)

## WoS data integration with local research information system (CRIS)



<http://ip-science.interest.thomsonreuters.com/data-integration>

# THANK YOU!

**Marcin Kapczynski**  
Strategic Business Manager

**Clarivate Analytics**  
Formerly the IP & Science business  
of Thomson Reuters

Phone: +48 22 653 97 52  
Mobile: +48 693 060 193

[marcin.kapczynski@tr.com](mailto:marcin.kapczynski@tr.com)

[clarivate.com](http://clarivate.com)  
[ipscience.tr.com](http://ipscience.tr.com)

**Clarivate  
Analytics**

Formerly the IP & Science  
business of Thomson Reuters

